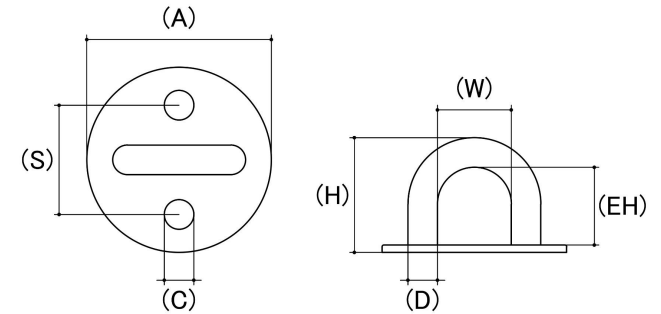


## Pad Eye Round

**Material:** Stainless Steel

**Class Grade:** A2-70 G304

**Corrosion Protection Level:** Excellent



*CAD drawings shown for graphic representation only.\**

Size	Height Overall (H) (mm)	Eye Diameter (D) (mm)	Inside Eye Width (W) (mm)	Height Of Eye (EH) (mm)	Holes Centre To Centre (S) (mm)	Width (A) (mm)	Hole Size (C) (mm)	Breaking Load	sku (qfind)
	Nom	Nom	Nom	Nom	Nom	Nom	Nom	Nom	
5mm	20.00	5.00	13.00	12.00	19.50	33.00	4.20	700	62PERS533
6mm	26.00	6.00	17.00	17.00	23.00	40.00	4.20	-	62PERS640
8mm	32.00	8.00	20.00	21.00	29.50	50.00	5.20	1600	62PERS850

**Disclaimer:**

Dimensional data and technical information was obtained from publically available sources and not acquired through standard agencies. It has been completed and compiled for reference purposes only; where discrepancies are found they are subject to change without notice. Bolt & Nut Australia makes no warranties or representations regarding the accuracy and validity of the compiled information and data. Contact the relevant standard authorities for accurate and detailed information.

\* CAD drawings may not reflect diameter, thread length or overall length.

© Bolt & Nut Australia Pty Ltd. All rights reserved.

Version: 18 Mar 2024